



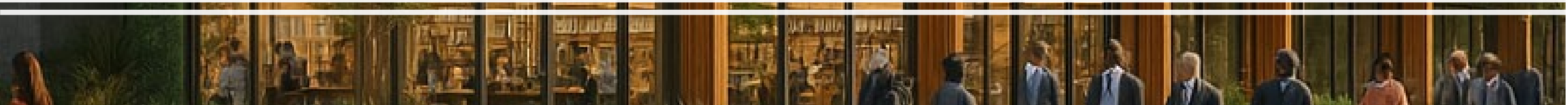
Port Moody  
**Public  
Library**

# Building Our Future: Library Master Plan

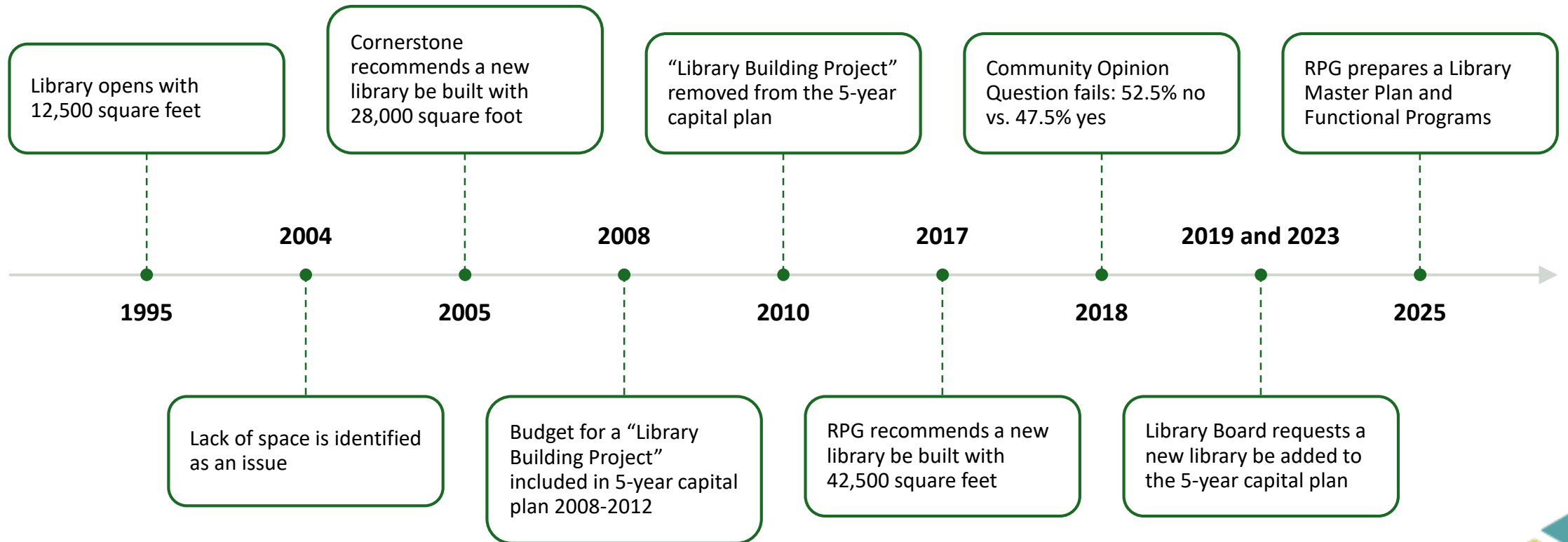
October 28, 2025



## Purpose of the Presentation



# Historical Context



# Why We Need a New Central Library

## Critical Space Shortage

- Current facility is stretched to capacity
- Standard is 1.0 sq ft per capita but current space is 0.32 sq ft per capita

## Population Growth Demands

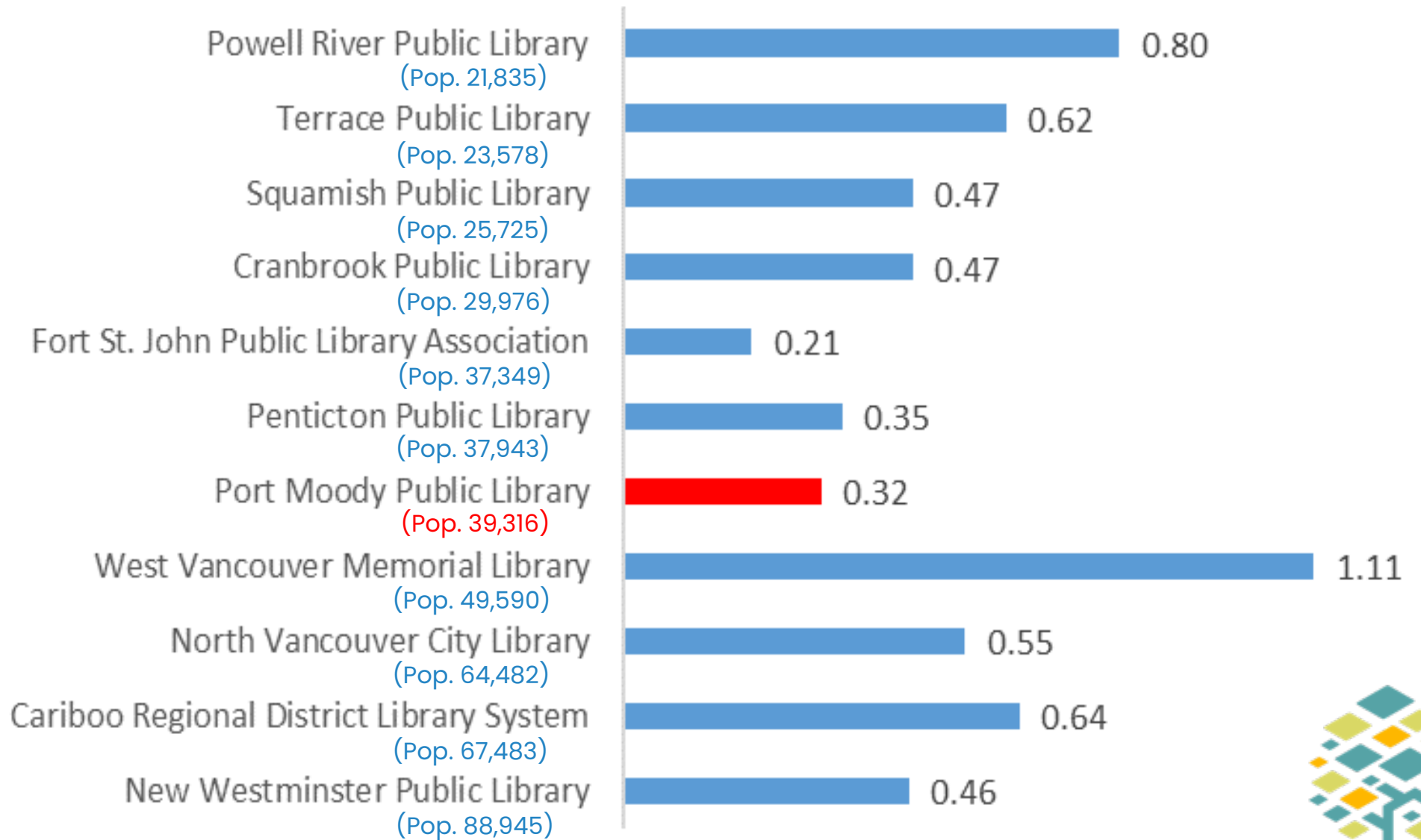
- Need to expand from 12,500 sq ft to 49,000 sq ft
- Must act now to support anticipated growth
- Current facility cannot support branch system development

## Enhanced Services

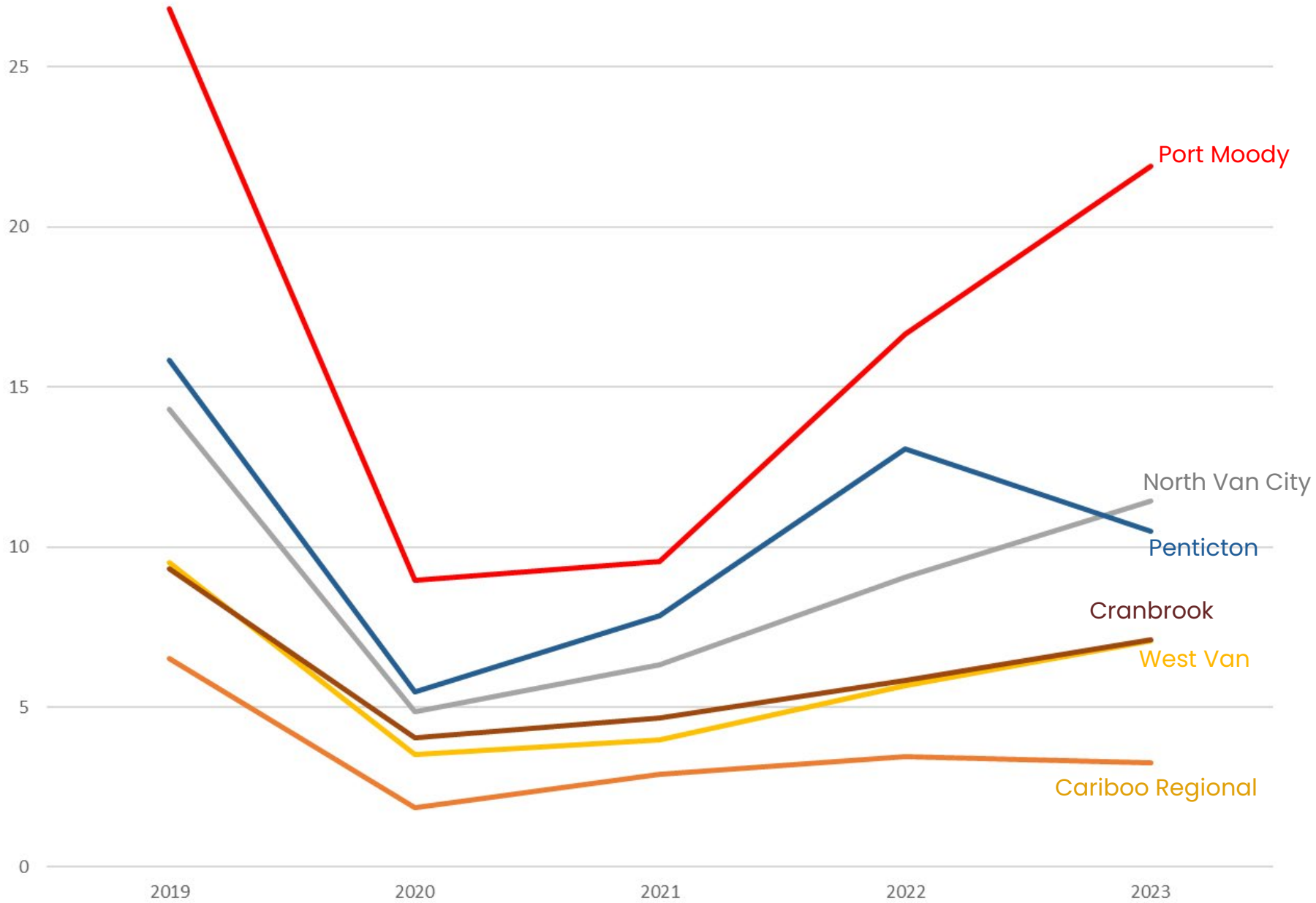
- Modern technology infrastructure
- Expanded programs and collections
- Flexible community spaces and improved accessibility



# Library Per Capita Square Footage



# In-Person Visit Per Square Foot





Digital  
Inclusion

Vibrant  
Community  
Hub

Safe and  
Welcoming  
Space

**Three Fundamental Community Needs**

# Overview of the Facility Master Plan

## 1. Central Library (49,000 sq ft)

- Main hub at Old Firehall site supporting branch operations

## 2. Community Branch (20,000–25,000 sq ft)

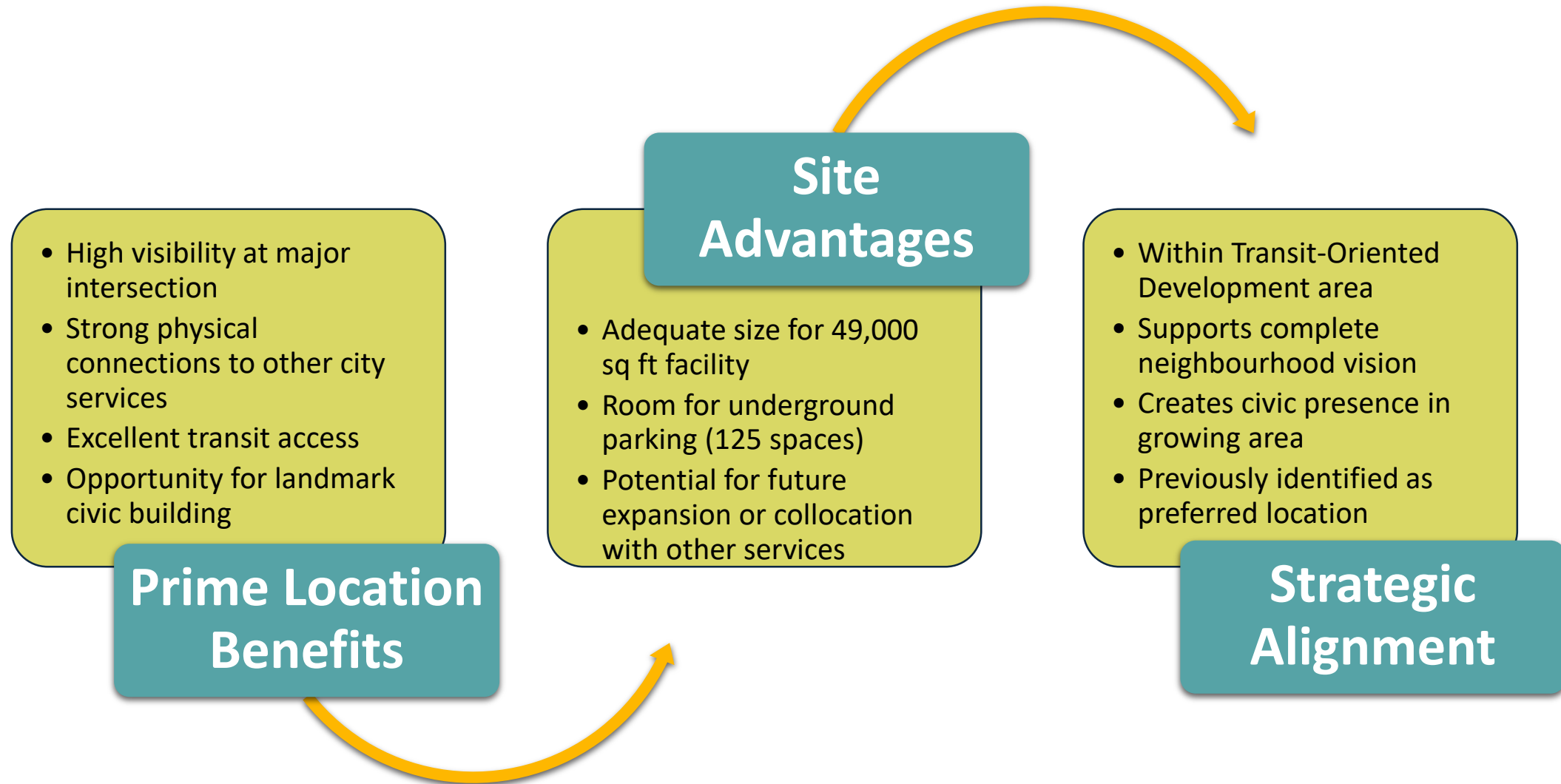
- Moody Centre location once population reaches 60,000

## 3. Express Branches (500 – 2000 sq ft)

- Self-service locations
- Cost effective means to expand services
- Flexible implementation



# Site Selection and Design Considerations





PORT MOODY  
PUBLIC LIBRARY

# Functional Program

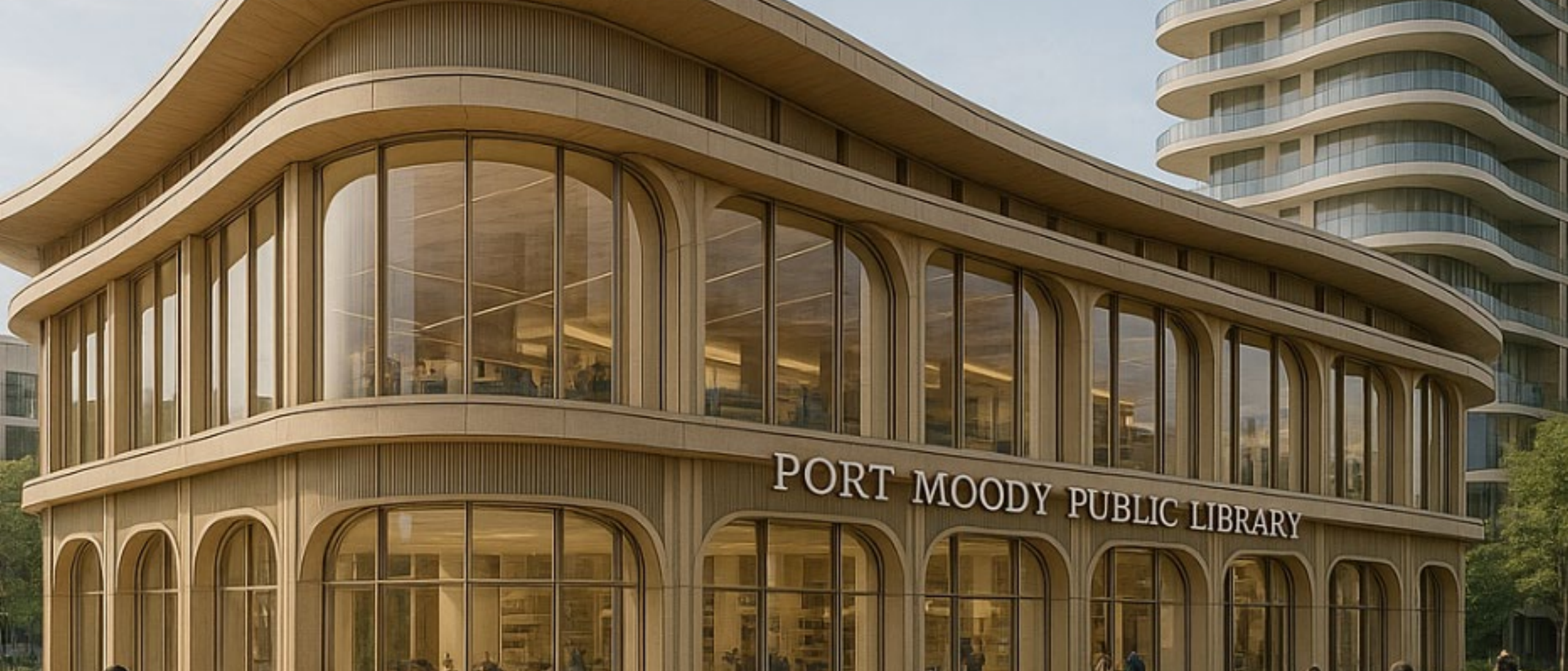


## Future Planning and Advocacy



# Fundraising Strategy and Community Engagement





PORT MOODY PUBLIC LIBRARY

# Call to Action





# Vision for the Future

